



21. Calder Banks, Queensbury, Bradford, BD13 1BY

Asking Price £115,000

- TWO BEDROOM TERRACED
- WELL PRESENTED THROUGHOUT
- ** CHAIN FREE **
- LOUNGE & SEPARATE KITCHEN
- GAS CENTRAL HEATING & UPVC DOUBLE GLAZING
- STUNNING RURAL VIEWS TO THE REAR
- PRIVATE ENCLOSED GARDEN
- ORIGINAL CAST IRON RANGE WITH OPEN FIRE
- IDEAL FOR FIRST TIME BUYERS & INVESTORS
- VIEWING HIGHLY RECOMMENDED

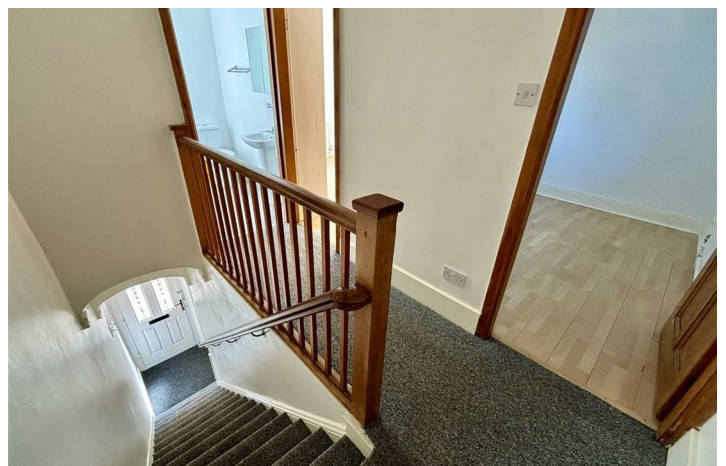
21. Calder Banks, Bradford BD13 1BY

**** CHAIN FREE ** TWO BEDROOM TERRACED ** IDEAL FOR INVESTORS/ FIRST TIME BUYERS**

**** This two bedroom property benefits from enclosed rear yard, original cast iron range & open fire, separate lounge & kitchen, well appointed bathroom. Located close to local amenities, schools, and parks, making it an ideal choice for those who appreciate community living. Do not miss the chance to make this lovely house your new home/ investment.**



Council Tax Band: A



HALL

Composite door, stairs to first floor, door to lounge.

LOUNGE

13'1 x 12'2

Feature original cast iron range open fire, solid wood floor, window to the front, central heating radiator,

KITCHEN

14'8 x 6'5

Range of fitted base & wall units, splash back tiles, stainless steel sink and drainer, electric oven with four ring gas hob and extractor fan, doors to rear garden and cellar, boiler cupboard, window to the rear.

CELLAR

Small keeping cellar, ideal for storage.

LANDING

Open spindle balustrade, access to the bedrooms & bathroom.

BEDROOM ONE

10'3 x 8'9

Window to the front, central heating radiator, laminated flooring, three door fitted wardrobe matching overhead cupboards.

BEDROOM TWO

10'1 x 7'10

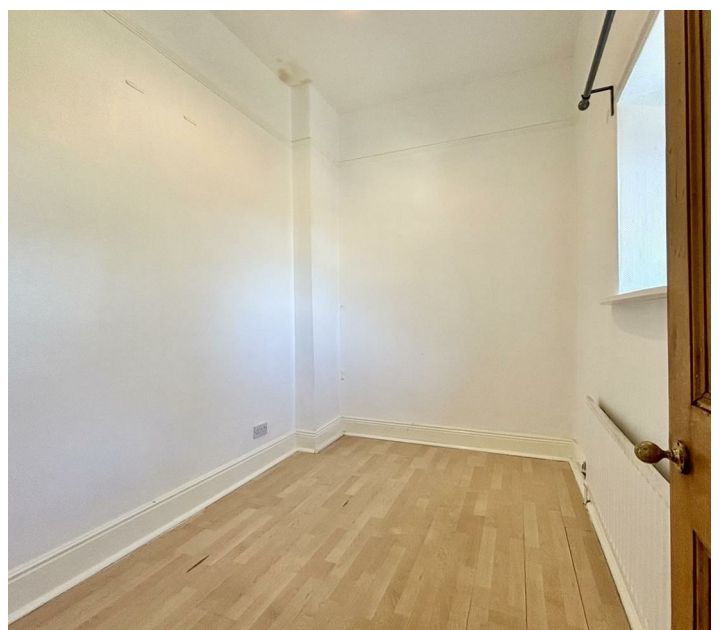
Central heating radiator, window to the rear with stunning views.

BATHROOM

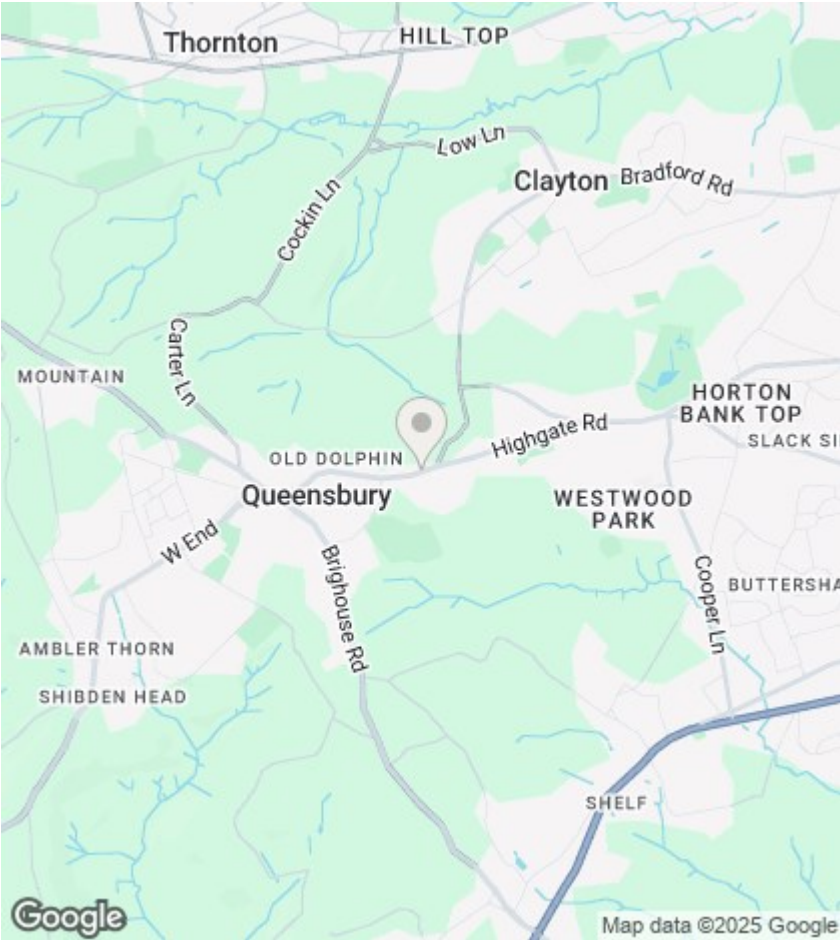
Three piece bathroom suite comprising; panelled bath with shower tap attachment and glass screen, low flush W/C, pedestal wash basin, central heating radiator, window to the front, loft access.

EXTERIOR

Enclosed private yard to the rear, gate to side, stone wall boundary.







Directions

Viewings

Viewings by arrangement only.
Call 01274884040 to make an appointment.

EPC Rating:
D

